

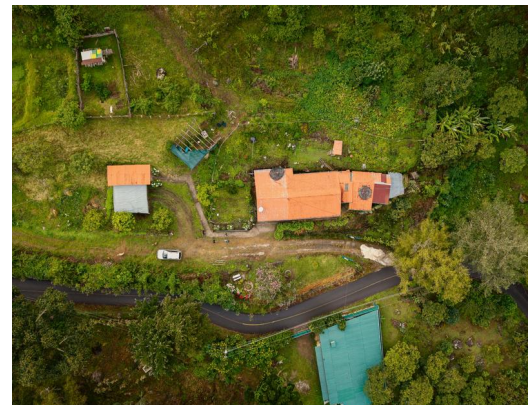
# El Sosiego Farm

📍 Dota, San Jose

# \$850,000

ID: 25006

Property Type: Land • Bedrooms: 1 • Size: 210,463 SQ M • Built: 2000



- Status: Active/Published
- Development Farm
- Mountain View
- Parking Spaces
- Investment Opportunities
- Acreage
- Mountain Properties

## Property Description

An agricultural property with excellent productive and tourism potential, located in Río Blanco de Copey de Dota, right along the main road to the Río Blanco community. Known as El Sociego, this farm offers ideal conditions for agriculture, trout farming, rural tourism, or commercial development.

**Main Features**

- Established Agricultural Production
- Blackberry cultivation
- 290 avocado trees, with 140 in full production
- Granadilla (passion fruit) production
- Mature cypress trees ready for timber harvesting
- Small basalt quarry not yet exploited
- Outstanding Water Resources
- Two springs with official water concessions issued by the National Water Directorate
- Excellent water flow for irrigation throughout the property
- Infrastructure
- Internal road in usable, regular condition running across the farm
- Five ponds suitable for recreational fishing or trout farming
- Simple house facing the public road: • 1 bedroom, 1 full bathroom
- Integrated living room, dining room and kitchen
- Ceramic flooring and wooden construction
- Two storage buildings near the main house
- Open area suitable for a restaurant or trout fishing center
- Commercial & Tourism Potential

This property is perfect for developing a trout fishing restaurant, eco-tourism projects, mountain cabins, or continuing the existing agricultural and forest production.

## Additional

- ID 25006
- Active/Published
- 1 Bedrooms
- For Sale
- Land
- Parking Spaces : 5
- \$850,000
- 1 Bathrooms
- View : Mountain

**Costa Rica Direct: +506 8583 0101**

**US Number: +1 919 717 0805**

Plaza Maleno Suite 11 La Fortuna, San Carlos Costa Rica

