

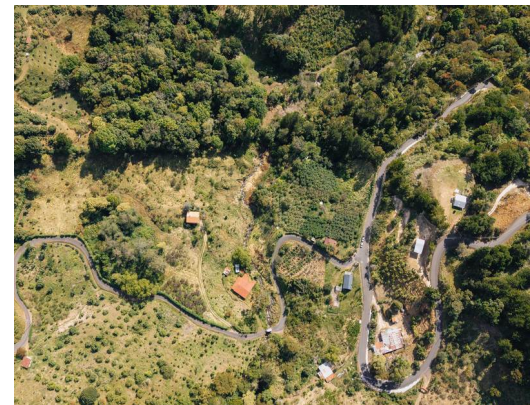
EL MANZANAL APPLE FARM

\$615,000

ID: 25519

 Dota, San Jose

Property Type: Land • Bedrooms: 3 • Size: 41,962 SQ M • Built: 2000



- Status: Active/Published
- Luxury Estate
- Vacation Rental
- Parking Spaces
- Mountain Properties
- Development Farm
- Mountain View

Property Description

Discover a unique high-altitude agricultural and lifestyle property nestled in the scenic mountain region of Copey de Dota, an area celebrated for its cool climate, fertile soils, and premium fruit production. The property spans 4 hectares, with approximately 80% of the land planted with productive apple and avocado crops, complemented by other high-altitude varieties such as peaches and cherimoyas. A picturesque apple forest enhances the natural beauty and character of the estate, creating a serene mountain atmosphere. The infrastructure includes a 200 m² mountain cabin, ideal as a family residence, vacation rental, or agritourism base, along with a separate worker or assistant house, perfectly suited for on-site operations and property management. One of the property's most valuable natural features is a river that runs across the entire estate, providing year-round water, enriching the landscape, and supporting both agricultural use and tourism potential.

Additional

- ID 25519
- Active/Published
- 3 Bedrooms
- For Sale
- Land
- Parking Spaces : 3
- \$615,000
- 2 Bathrooms
- View : Mountain

Costa Rica Direct: +506 8583 0101

US Number: +1 919 717 0805

Plaza Maleno Suite 11 La Fortuna, San Carlos Costa Rica

