


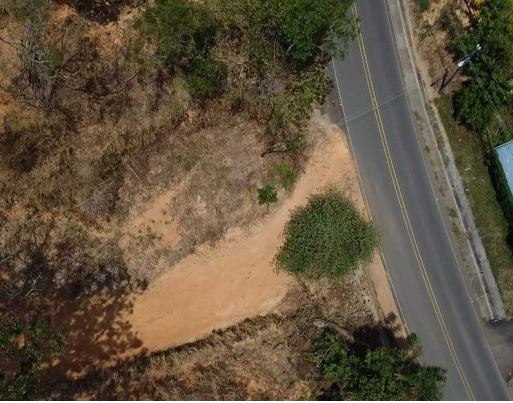
Incredible Property for Sale in Desmonte - Prime Location Near Atenas

\$200,000

ID: 23455

 Orotina, Alajuela

Property Type: Land • Size: 16,450 SQ M •



- Status: Active/Published
- Close To Transport
- Investment Opportunities
- New Projects
- Sub Dividable
- Close To Schools
- Commercial
- Mountain Properties
- Owner Financing
- Close To Shops
- Internet
- Mountain View
- Pets Allowed

Property Description

Looking for the perfect property to build, invest, or develop in Costa Rica? This exceptional 16,450 m² (4.06 acres) lot offers breathtaking panoramic views, a strategic location, and outstanding development potential. Perfectly positioned between Atenas and Orotina, it combines the tranquility of the countryside with convenient access to main highways and both towns. Property Highlights • 16,450 m² (4 acres) of land with stunning mountain and valley views • Flat to gently sloped topography – ideal for construction • Direct access from the National Road • Strategic location between Atenas and Orotina, close to amenities and services • Ideal for a private residential estate or small development project • Peaceful natural environment surrounded by greenery • Easy access to Route 27, connecting quickly to San José and the Pacific coast • Plenty of space for multiple homes, gardens, guest houses, or recreation areas Pricing Options • \$5,500 total price if the property is purchased as a single parcel • If the property is split into two sections, the price will be \$6,500 per square meter This property represents a rare opportunity to create something truly special – from a private family estate to an investment project with excellent return potential.

Additional

- ID 23455
- Active/Published
- For Sale
- Land
- \$200,000
- View : Mountain

Costa Rica Direct: +506 8583 0101

US Number: +1 919 717 0805

Plaza Maleno Suite 11 La Fortuna, San Carlos Costa Rica

